

Figure 1 Monthly measured meteorological datasets from 3 different stations

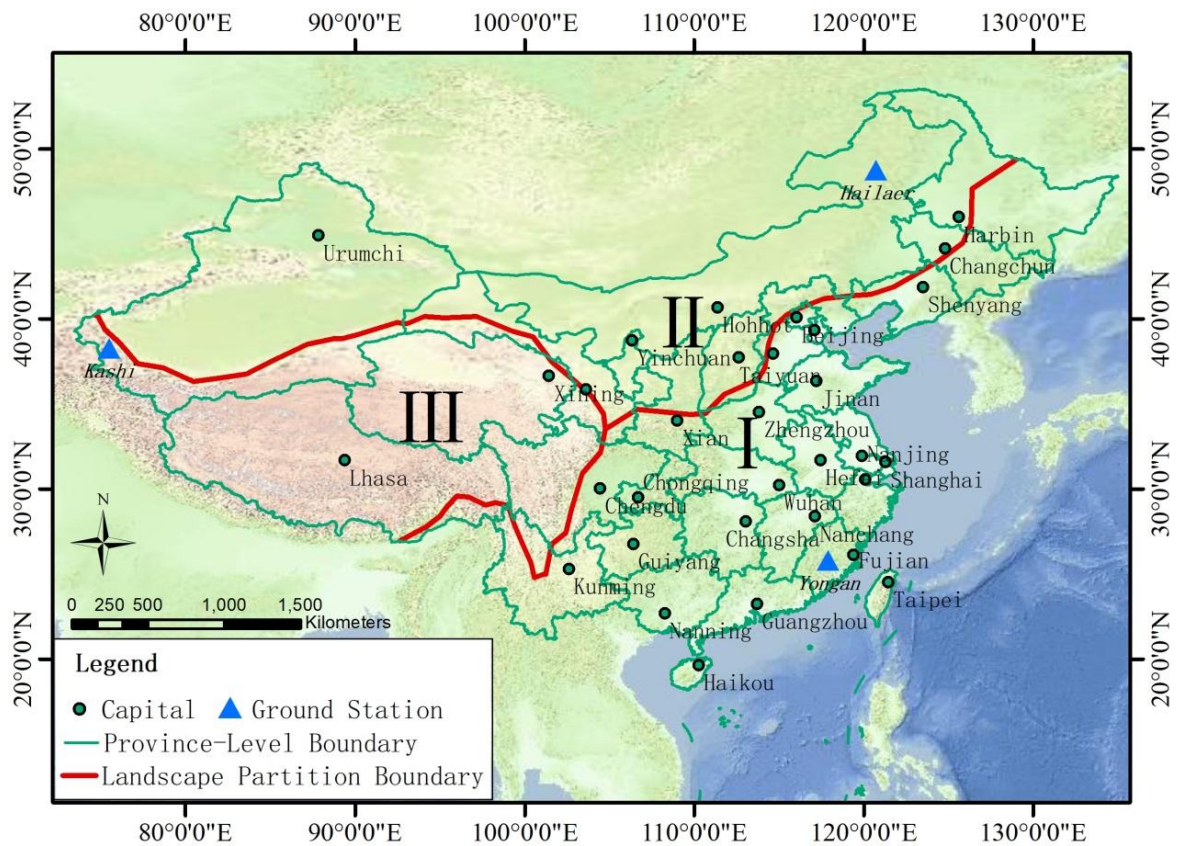


Figure 2 China Landscape Map with Storm Zoning

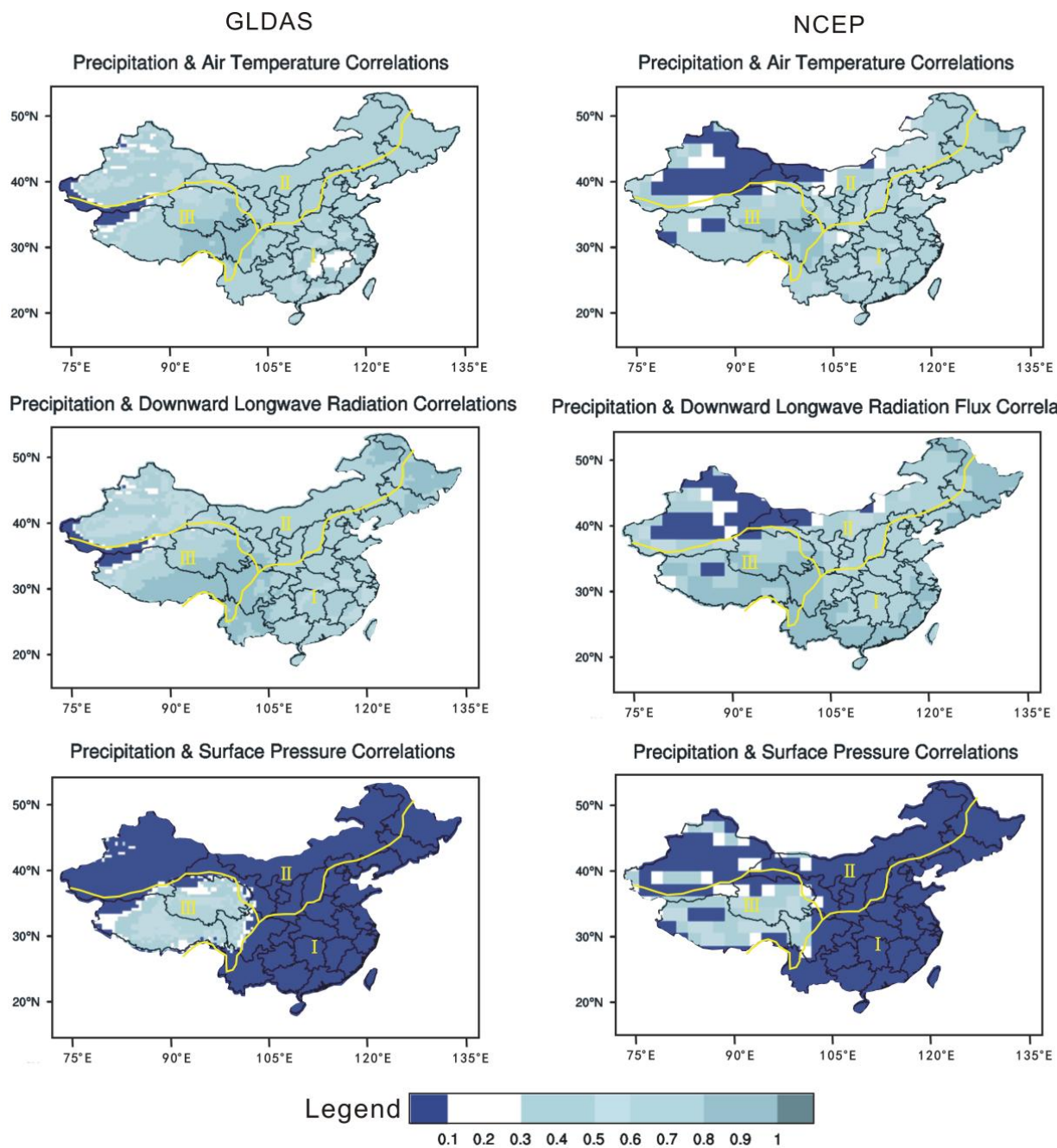


Figure 3 Correlation of precipitation and other meteorological factors (temperature/longwave/pressure) by GLDAS and NCEP ( $r=0.086$  at a 99% confidence level)

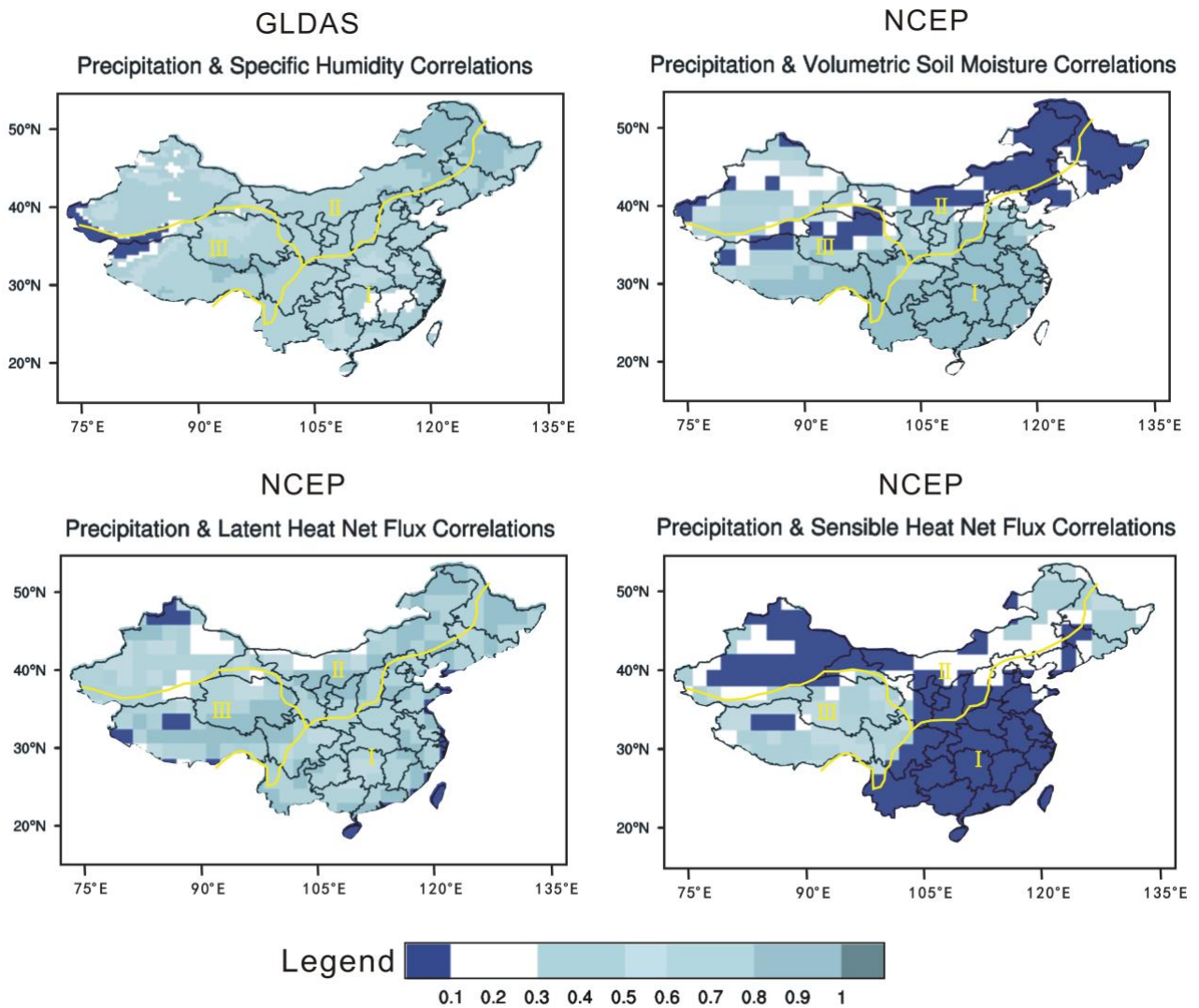


Figure 4 Correlation of precipitation and other meteorological factors (humidity/soil moisture/latent heat/sensible heat) by GLDAS and NCEP ( $r=0.086$  at a 99% confidence level)



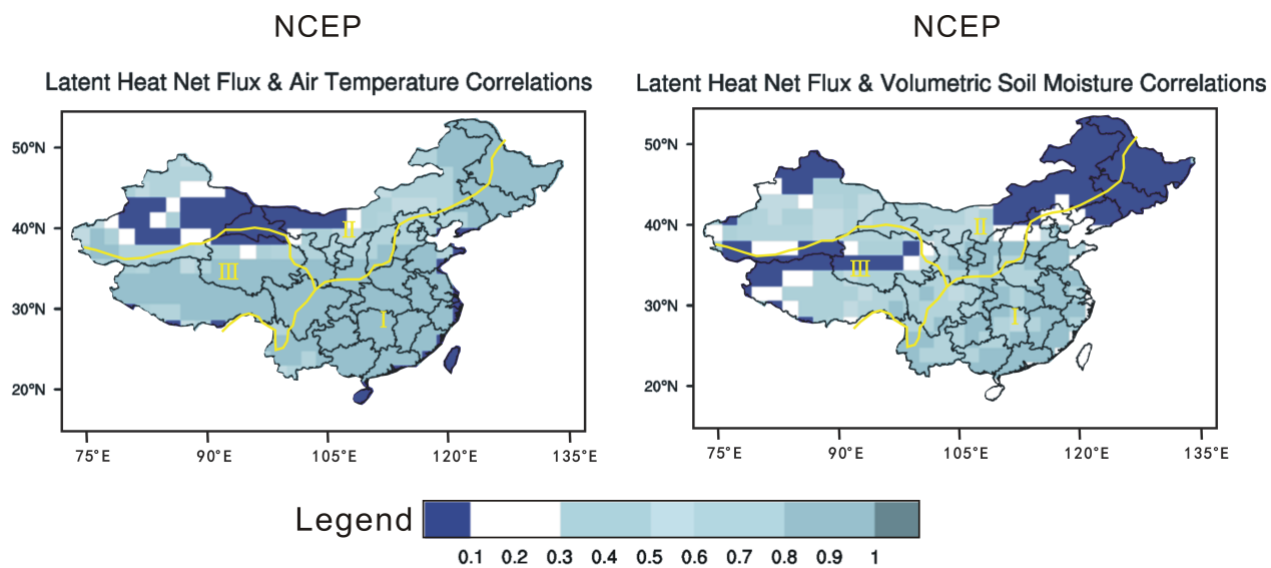


Figure 5 Correlation of latent heat and other meteorological factors (temperature/soil moisture) by NCEP ( $r=0.086$  at 99% confidence level)

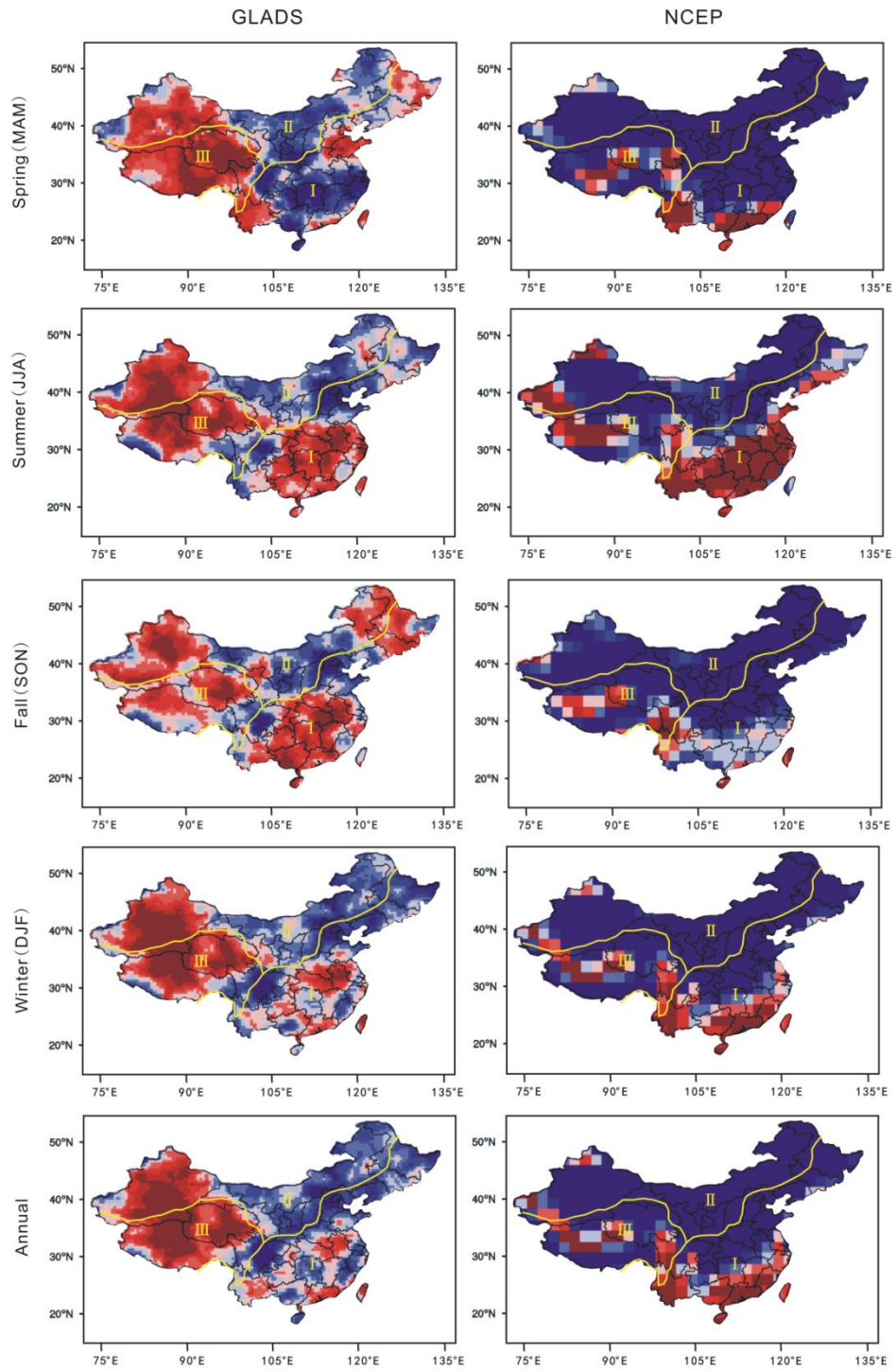


Figure 6 Mann-Kendall test Z values by GLDAS and NCEP for precipitation ( $Z=1.96$  at 95% confidence level)

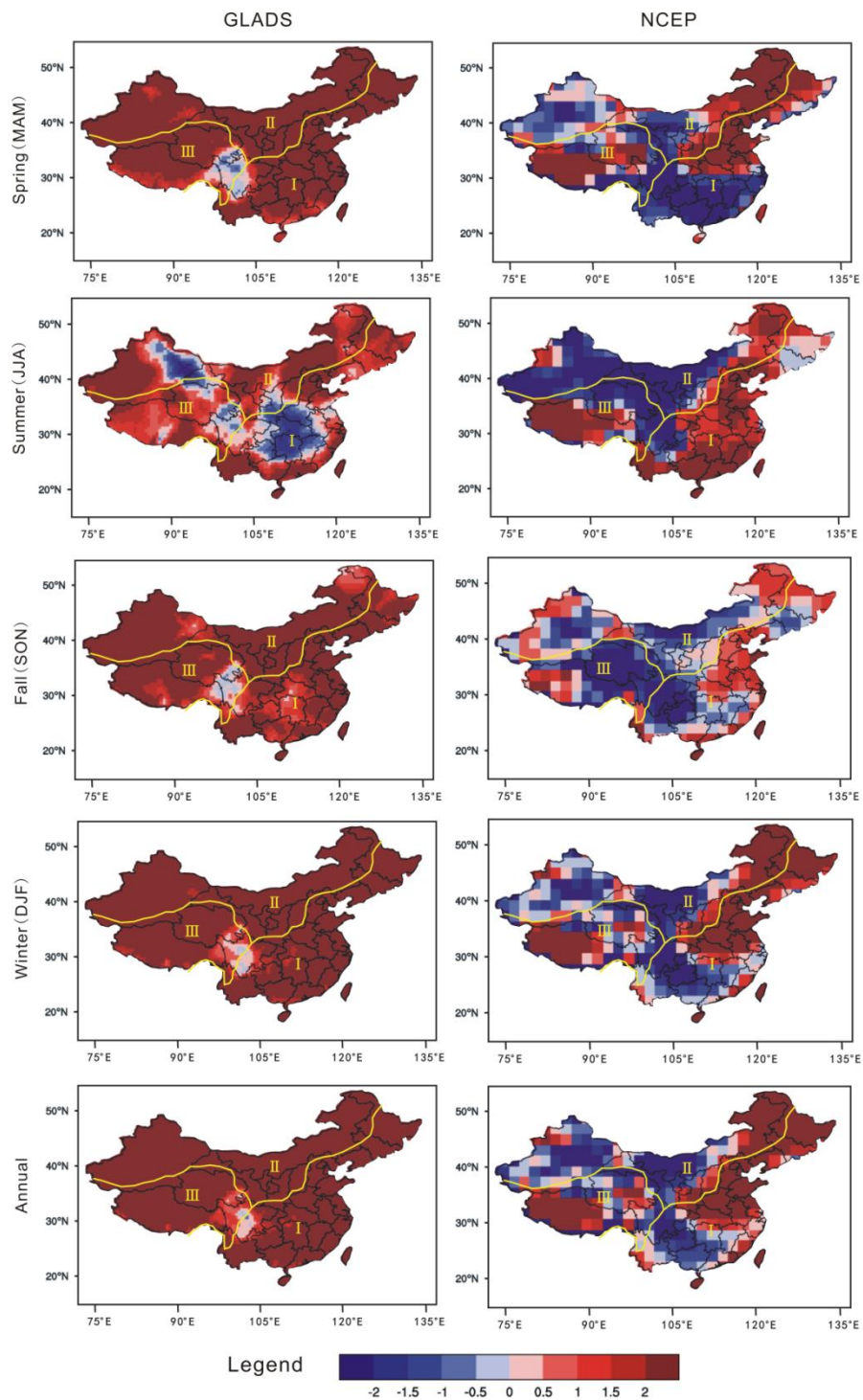


Figure 7 Mann-Kendall test Z values by GLDAS and NCEP for surface temperature ( $Z=1.96$  at 95% confidence level)

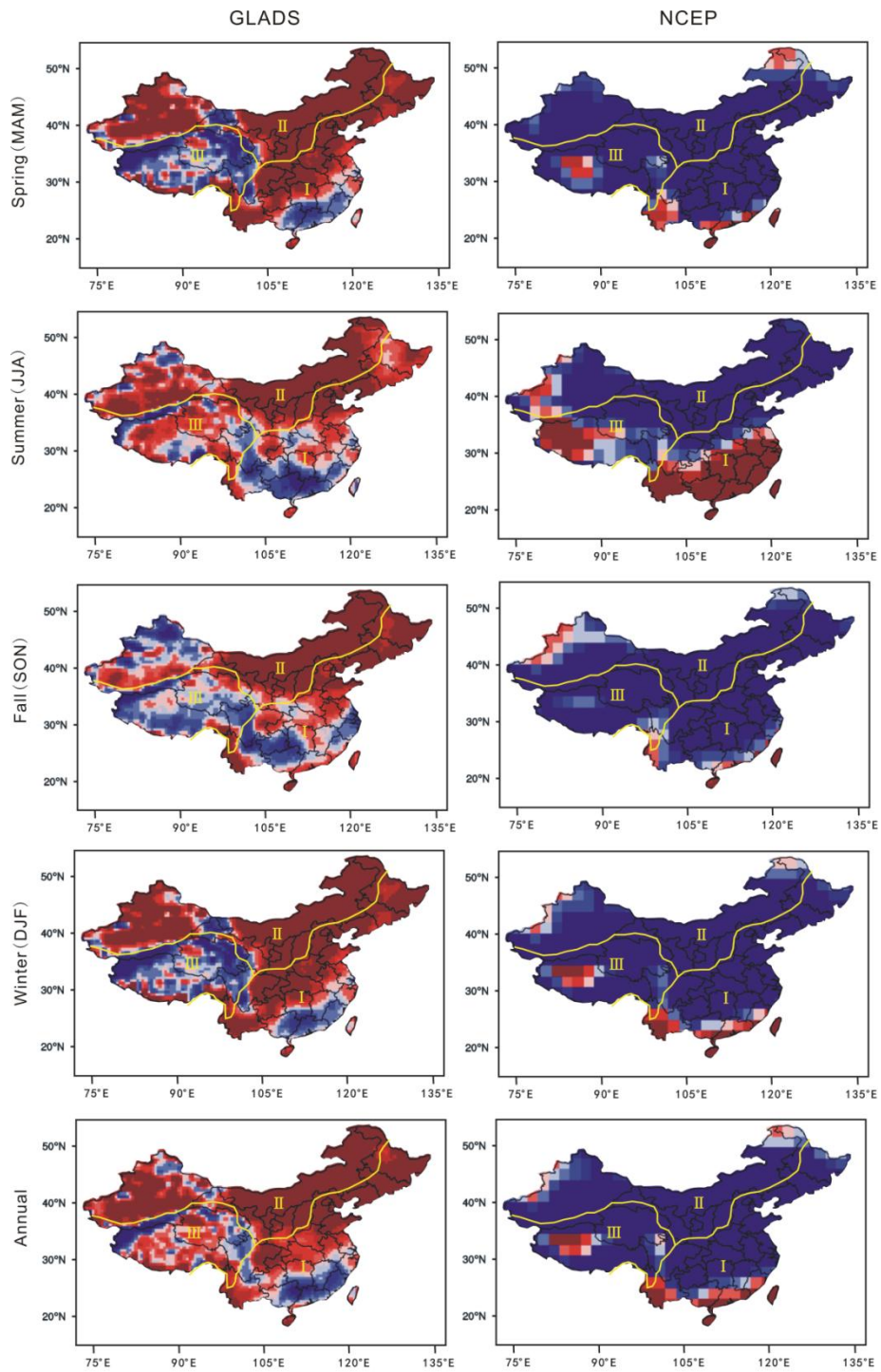


Figure 8 Mann-Kendall test Z values by GLDAS and NCEP for downward longwave radiation ( $Z=1.96$  at 95% confidence level)



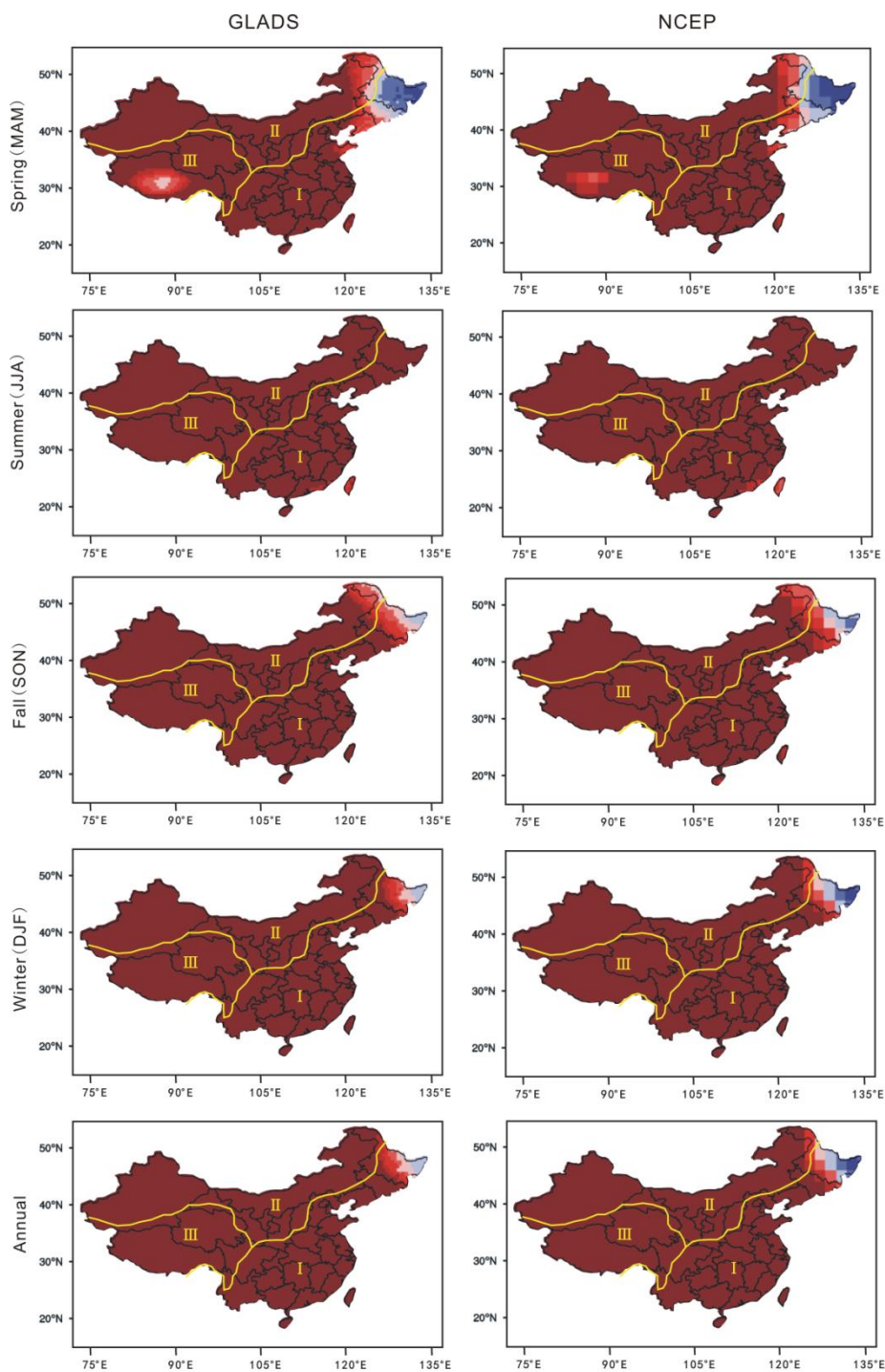


Figure 9 Mann-Kendall test Z values by GLDAS and NCEP for surface pressure ( $Z=1.96$  at 95% confidence level)

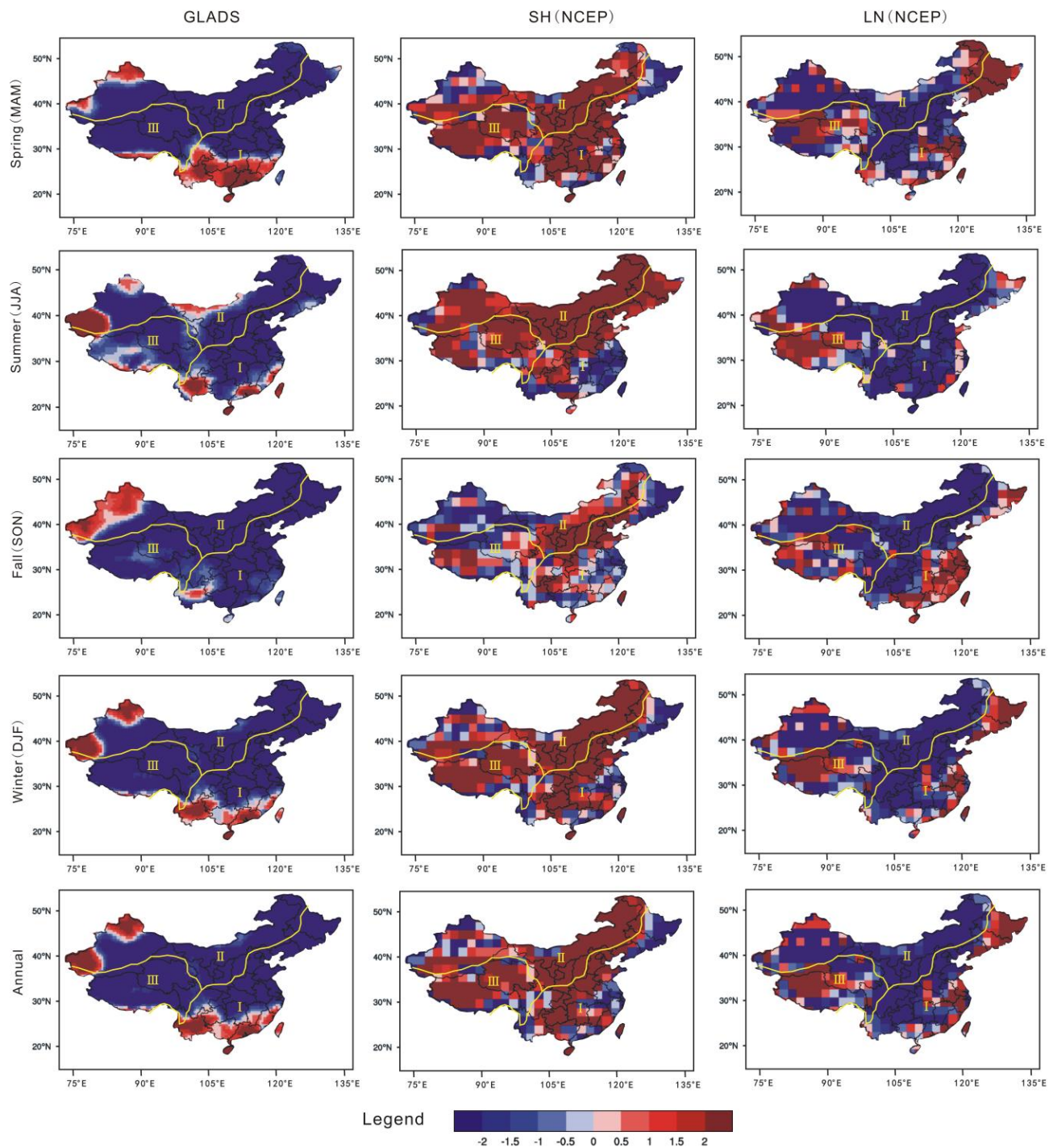


Figure 10 Mann-Kendall test Z values for humidity by GLDAS and for sensible/latent heat by NCEP (Z=1.96 at 95% confidence level)

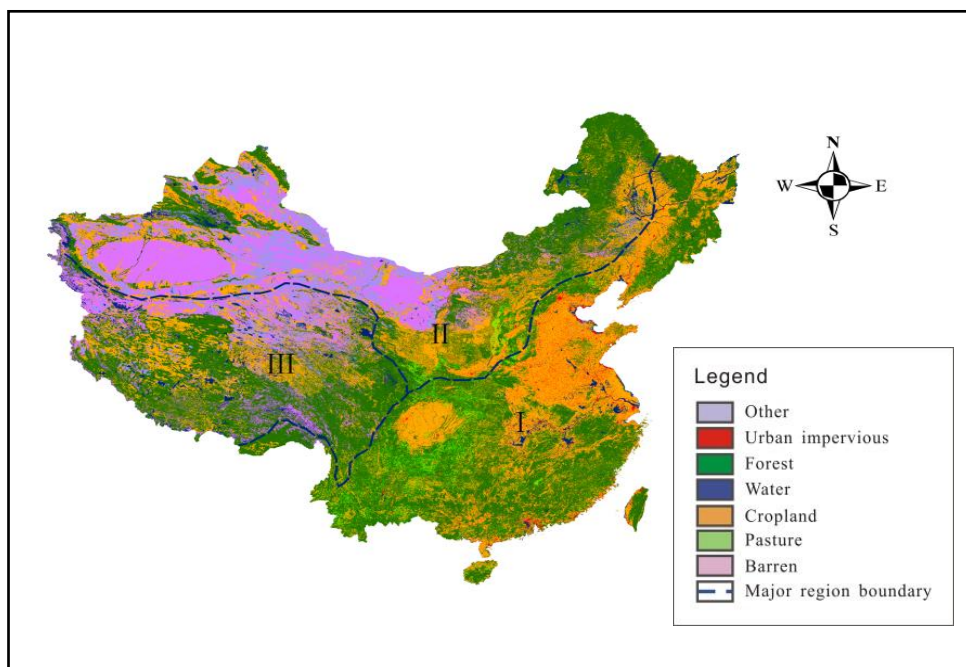


Figure 1 Land Use Map